

Liz Kelly, Professor of Sexualised Violence at London Metropolitan University, UK



Liz Kelly, is Professor of Sexualised Violence at London Metropolitan University, where she is also Director of the Child and Woman Abuse Studies Unit (CWASU). She has been active in the field of violence against women and children for almost 30 years. She is the author of *Surviving Sexual Violence* (1988), which established the concept of a 'continuum of violence' and over 70 book chapters and journal articles. As special advisors to the British Council CWASU undertakes considerable international work (in Africa, Asia, Europe and South America), providing consultancy and training on research and policy.

Anastasia Loukaitou-Sideris, Professor of Urban Planning, UCLA , USA



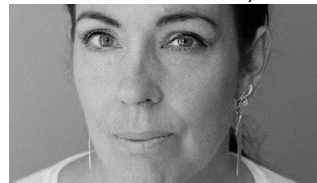
Anastasia Loukaitou-Sideris is Associate Provost for Academic Planning at UCLA, Associate Dean of the UCLA Luskin School of Public Affairs, and Professor of Urban Planning. Her area of specialization is urban design and spatial planning. She holds degrees in architecture and urban planning and has published extensively on issues of transit safety and security, women's travel, transit-oriented development, inner-city revitalization, gentrification and displacement. She has served as a consultant to the Transportation Research Board, Southern California Association of Governments, Project for Public Spaces, Los Angeles Neighborhood Initiative, Mineta Transportation Institute, Robert Wood Johnson Foundation, the Greek government, and many municipal governments on issues of transportation and urban design. She has published more than 100 articles and five books: *Urban Design Downtown: Poetics and Politics of Form* (1998); *Jobs and Economic Development in Minority Communities* (2006); *Sidewalks: Conflict and Negotiation over Public Space* (2009); *Companion to Urban Design* (2011); and *The Informal American City* (2014).

Juma Assiago, the Global Coordinator of the Safer Cities Programme at UN-Habitat



Juma Assiago, an Urbanist and Social Scientist, is the Global Coordinator of the Safer Cities Programme at UN-Habitat. He holds a Masters of Science degree in Sustainable Urban Development (Oxford University, United Kingdom). He has accumulated 18 year international working experience providing technical support to both national and local governments on the development and implementation of city crime prevention and urban safety strategies.

Jenny Westerstrand, president of the National Organisation for Women's Shelters and Young Women's Shelters, Roks, Sweden



Jenny holds a Master of Law and is Doctor of Law, Public International Law, from Uppsala University. Jenny was affiliated to the Department of Law, Department of Sociology and to Feminist Studies in Social Sciences at Uppsala University as a researcher. She was the coordinator of the first national prevalence study on violence against women in Sweden, *Captured Queen*. The study represented a shift in methodology and analysis, using research on violence against women as a tool when designing the study and analysing the results. The results caused a major stir in media but is now regarded a pioneer work. Jenny have also been conducting research on sexual violence and honour related violence and sexual violence against young women.

Supreet K Singh, representative of SafeCity Initiative, India



A writer, film director and a gender activist, Supreet has transitioned from 15 years of corporate experience to an award-winning filmmaker & running an NGO. A partner at Red Dot Foundation, Safecity, she overlooks the functioning of the organization and specifically handles the operations, marketing as well as creating campaigns to engage women and men in solutions and designing partnerships globally. She is a certified personal counsellor and conducts workshops on sexual violence with children, communities and corporates. A Vital Voices VV Lead fellow, she was recently awarded the Social Innovator Leadership award by Biz Divas. She is also the recipient of Gold Stevie Award for Female Executive of the Year - Government or Non-Profit -10 or Less Employees in 2016.

Fiona Vera-Gray, Research Fellow based at Durham Law School, UK



Fiona Vera-Gray is a Research Fellow based at Durham Law School. She researches violence against women and is an expert in public sexual harassment, acting as a special advisor to Westminster government during their recent inquiry and having published widely in the area. Her book [The Right Amount of Panic: How women trade freedom for safety](#) draws on original research from the UK to explore the habitual strategies women and girls employ to maintain a sense of safety in public spaces. It argues that as the vast majority of this work is pre-emptive we often cannot even know if what we are experiencing as intrusive *is* intrusive unless it escalates.

"Ida Johansson: Beyond the portray of a victim"



"Ida Johansson: Beyond the portray of a victim"

A teaser of the film "EFTER IDA / LIFE AFTER IDA" will be shown the 17th October 2018 with comments by Ida's mother and Johanna Aust, filmmaker (FlickFilm, Germany).

Anna Möller, director of the Rape Victim Clinic at Stockholm South Hospital, Sweden



Anna Möller is a gynecologist and medical director of the Rape Victim Clinic at Stockholm South Hospital. Department of Clinical Science and Education, Obstetrics and Gynecology at Karolinska Institutet, Stockholm South General Hospital. Her research interests include intimate partner violence, posttraumatic stress disorder, and stress-related steroid hormones in rape victims.

Elisabeth Löfgren, Vice-Chairman of the National Committee For UN Women, Sweden



Vice-Chairman of The Swedish national Committee for UN-Women. The organization dedicated to gender equality and the empowerment of women. She has worked for Amnesty International for 25

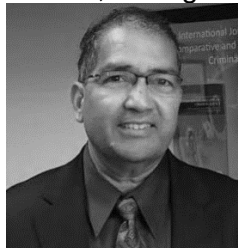
years. For several years, campaign manager, including a campaign on women's rights, with special focus on violence against women in armed conflicts and the campaign "Stop violence against women".

Katja Grillner, professor of Critical Studies in Architecture at KTH, Sweden



Katja Grillner currently serves as Dean of Faculty at KTH (2015-). Grillner is the director of Architecture in Effect, a national initiative for a strong research environment and co-founded the feminist architecture teaching and research group FATALE.

Mahesh K. Nalla, Professor, School of Criminal Justice, Michigan State University, USA



Mahesh Nalla is a professor in the School of Criminal Justice, at Michigan State University, USA. His primary research interests are in emerging and transitional democracies on two broad areas: *Gendered victimization and public health & Governance, legitimacy, and social regulation*. Prof. Nalla serves as Editor-in-Chief of the *International Journal of Comparative and Applied Criminal Justice*, which is the official journal of the International Division of the American Society of Criminology (ASC). He has coordinated and led a global project firearm related violence prevention programs for the United Nations.

Vania Ceccato, professor of urban and community safety at KTH and national coordinator of [SafePlaces network, Sweden](#)



Vania Ceccato is at the Department of Urban Planning & Environment, School of Architecture and the Built Environment, KTH Royal Institute of Technology, Stockholm, Sweden. Her

research is on the situational conditions of crime and crime prevention in urban and rural environments. Gendered safety and the intersectionality of victimization are essential components in most of her research in both Sweden and Brazil. She is the editor of a double-special issue on [Women's transit safety](#) in 2017 and coordinator of the global study on [Transit safety among college students](#) together with Prof Anastasia Loukaitou-Sideris, UCLA, USA (see the conference program).

Organiser



Sponsors

Centre for a Sustainable Built Environment
& Centre for the Future of Places