

(Anti-)Social Stockholm

Understanding interrelations of socio-spatial segregation

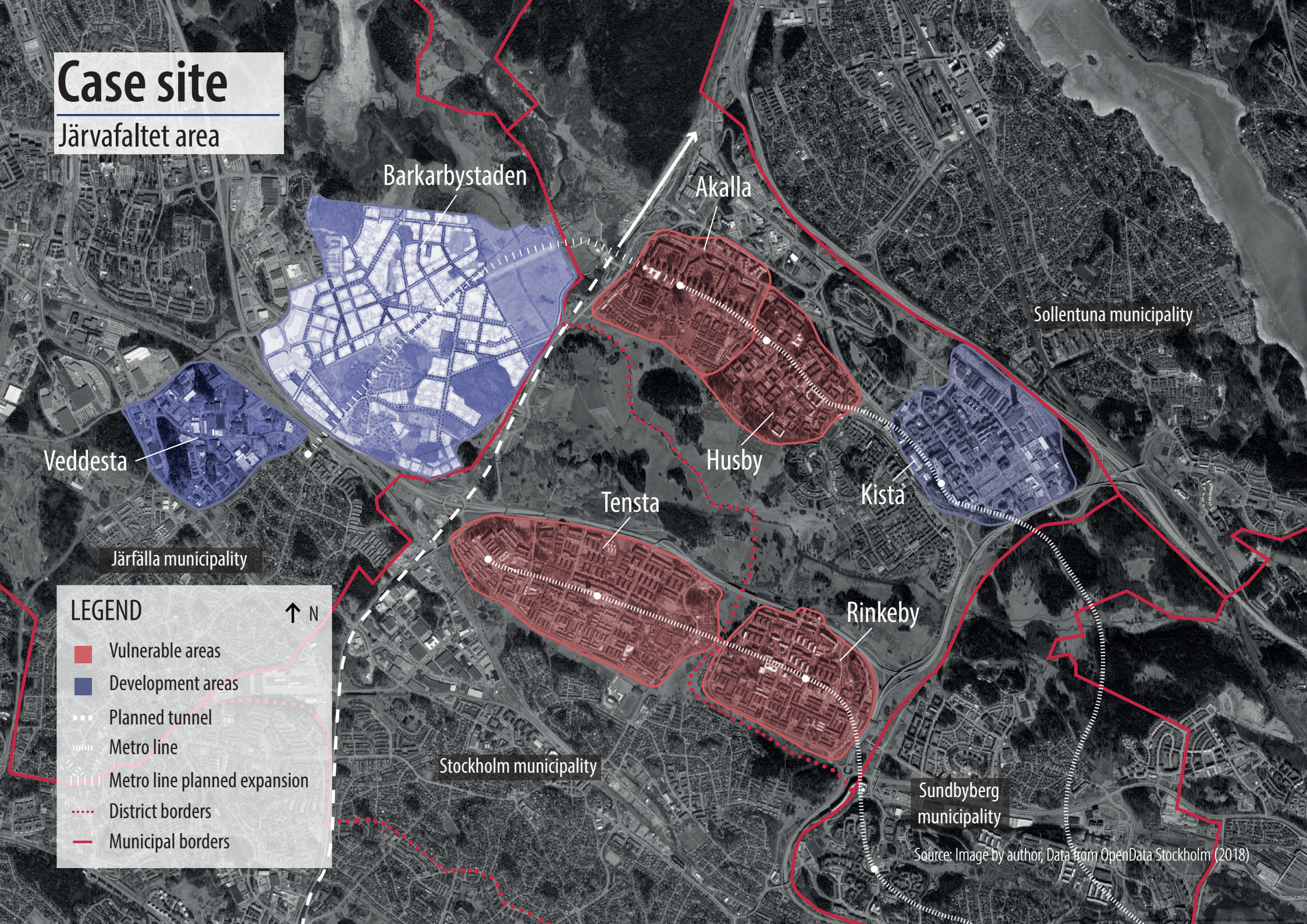
Mark Scholten - 4346548

Colloquium



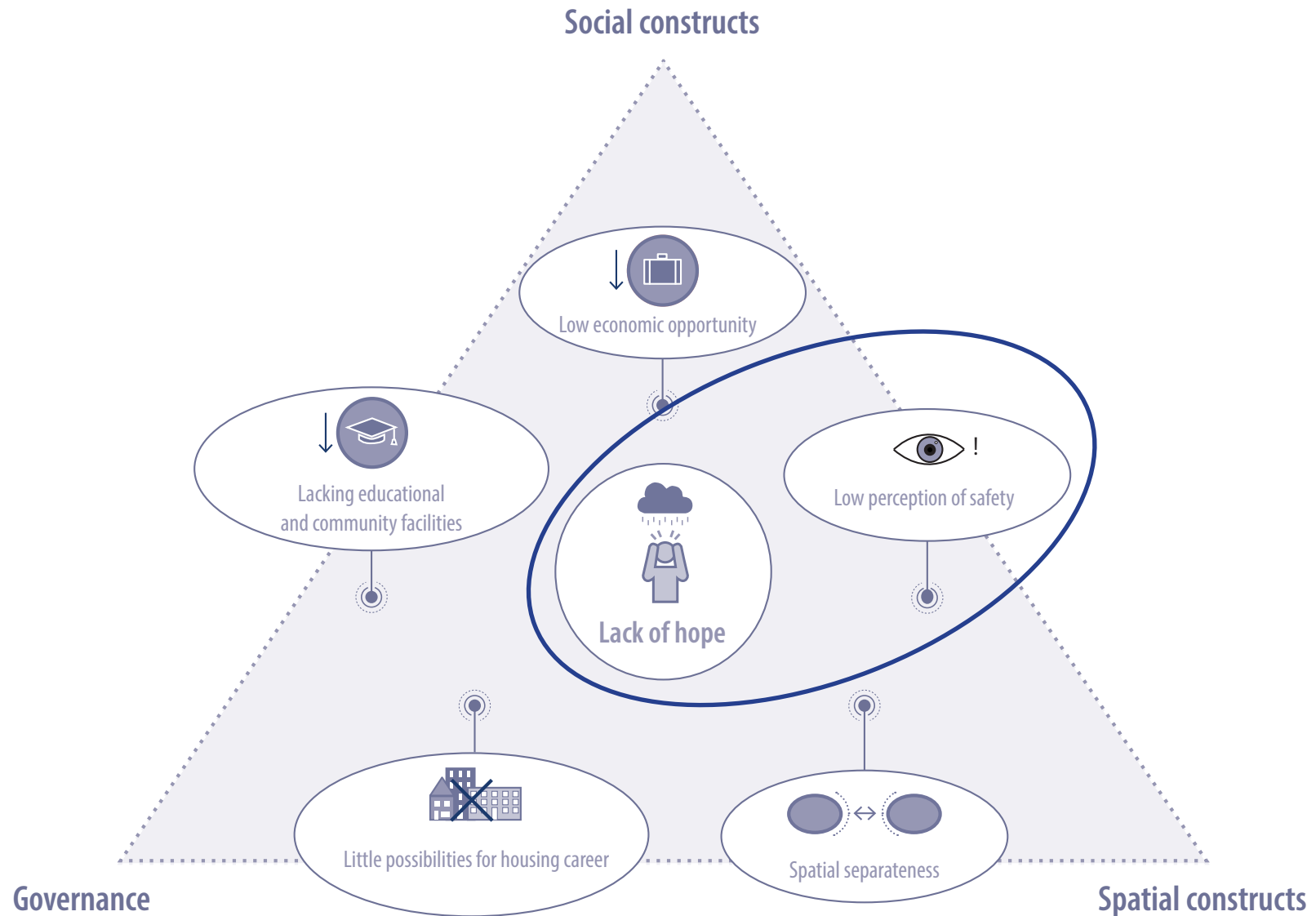
Case site

Järvafältet area



Core issues

Accumulation of welfare problems



Source: Image by author

Fieldwork

Husby



What to do?

Design theory



Jane Jacobs (1916-2006)

There is a need for city diversity and local(!) economic opportunity!

1. 'The district must serve **more than one primary function**, preferably more than two. They must insure the presence of people at different schedules and are in the place for different purposes';
2. '**Blocks must be short**. Streets and opportunities to turn corners must be frequent';
3. 'Districts must **mingle buildings that vary in age and condition**, including a good proportion of old ones. Mingling must be fairly close-grained;
4. 'There must be a **sufficiently dense concentration of people**, for whatever purpose they may be there. This includes dense concentration for people who are there out of residence.'



Case site

Järvafältet area

Criteria:

1. Representative urban fabric
2. Close to new developments
3. Close to municipal boundaries
4. Highest degree of urgency

Barkarbystaden

Akalla

Sollentuna municipality

Veddesta

Husby

Kista

Tensta

Rinkeby

Järfälla municipality

Stockholm municipality

Sundbyberg municipality

LEGEND

↑ N

- Vulnerable areas
- Development areas
- Planned tunnel
- Metro line
- Metro line planned expansion
- District borders
- Municipal borders

Source: Image by author, Data from OpenData Stockholm (2018)

Strategy testing

Which streets have most potential?

Angular integration

Non-motorised network
1500 m walking distance

LEGEND ↑N
(10%) High int.

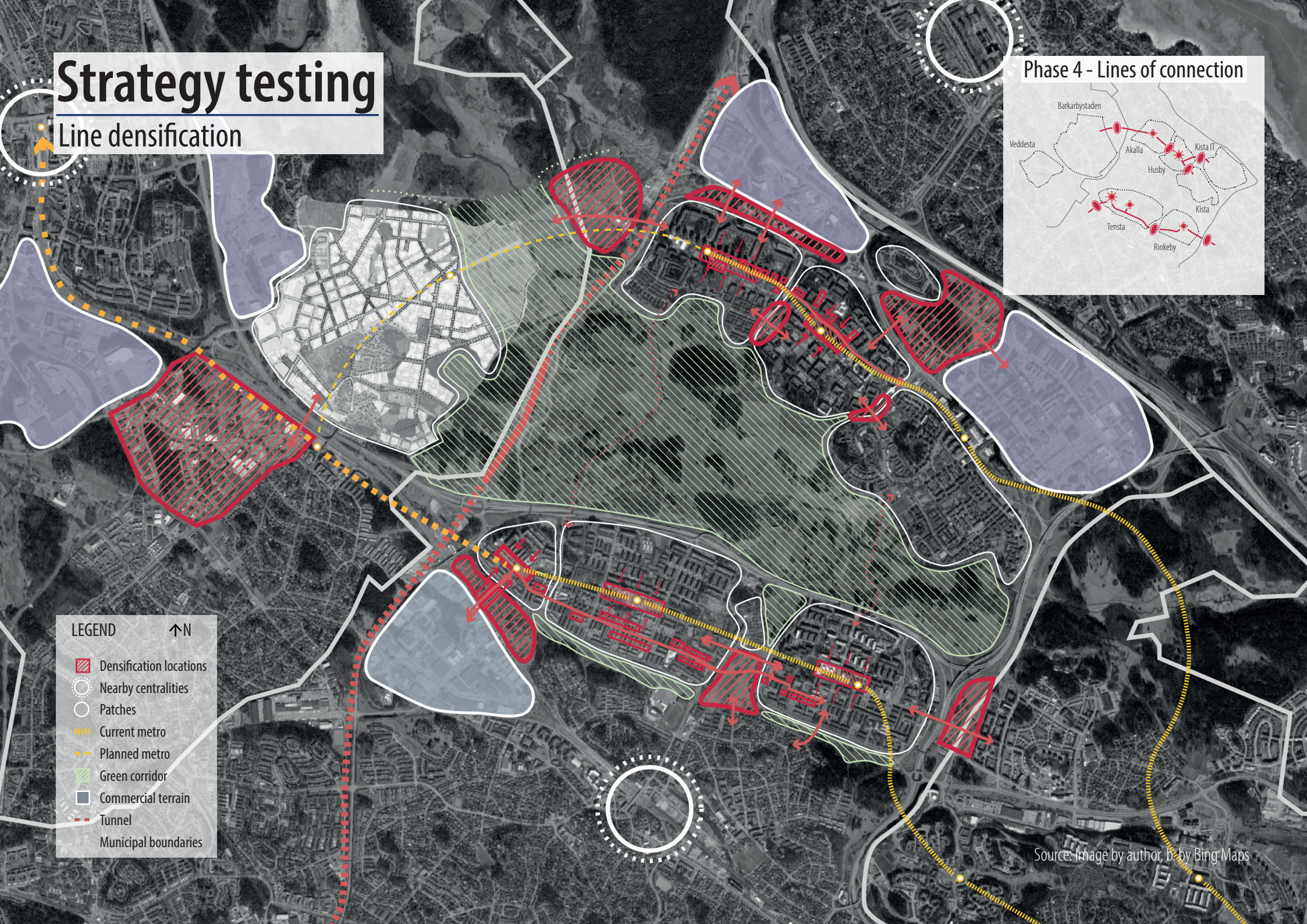


Low int.

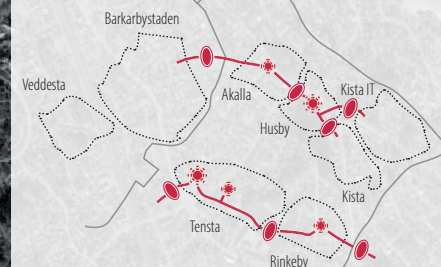
Source: data from Berghauser Pont, Stavroulaki & Marcus (2019)

Strategy testing

Line densification



Phase 4 - Lines of connection



LEGEND



- Densification locations
- Nearby centralities
- Patches
- Current metro
- Planned metro
- Green corridor
- Commercial terrain
- Tunnel
- Municipal boundaries

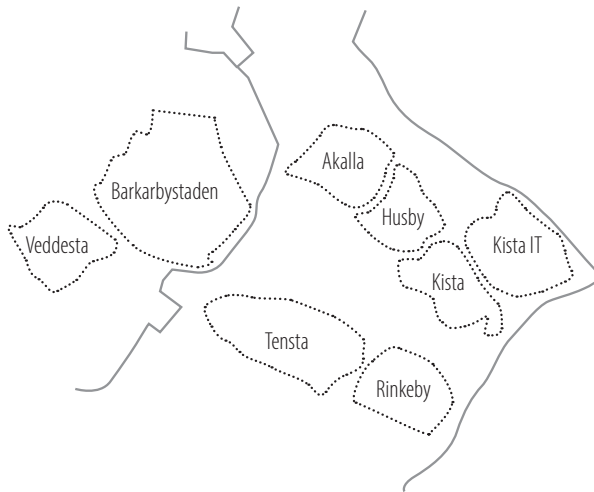
Source: Image by author, b. by Bing Maps

Phasing

Logic steps

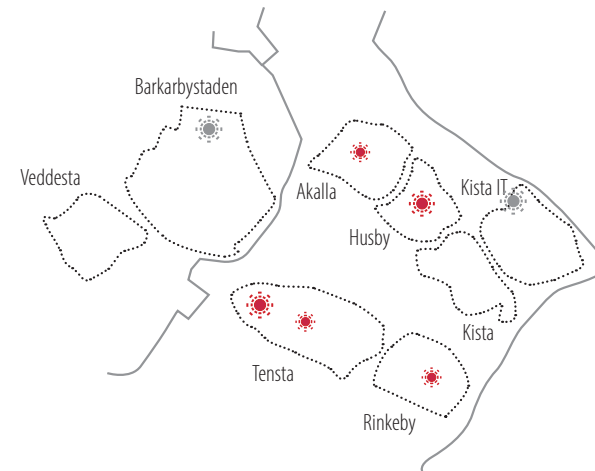
Phase 1

Preparation and initiation



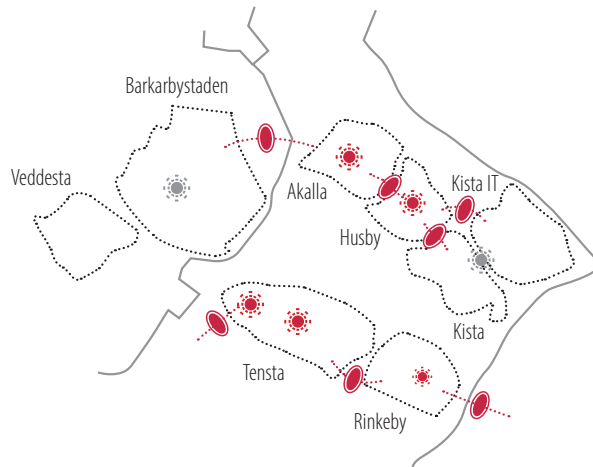
Phase 2

Intensifying attraction points



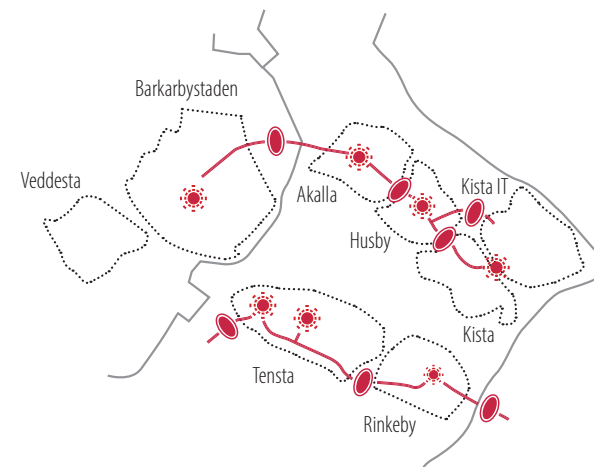
Phase 3

In-Between development



Phase 4

Creating lines of connection



Thank you!

