

The background of the slide is a faded, light-colored photograph of a small-town street. In the foreground, a dark blue car is on the left, and a white car is on the right. In the background, there are several buildings, including one with a sign that says "RUBA". A banner is hanging across the street in the background, with text that includes "RADFORD HIGH" and "SECOND WEEK".

Radford Resilience

Towards a proactive assessment of school safety and preparedness (A case study in small-town America)

‘Shawn K. Smith, Ph.D
Radford University

Background

- School-based Shootings in the U.S. since 1999
- Reactive versus Proactive Preparedness
- The CPTED Framework
- Radford Public Schools/Belle Heth Elementary
- Current Preparedness Protocol: “Run-Hide-Fight” (No CPTED)

Project Goals

- Photo and video documentation of risk level for active shooter incident....is the school district at risk?
- 2D and 3D mapping of school grounds for active shooter and emergency response training
- Formal CPTED Analysis and Reporting
- Research and analytical framework for future RCPS analyses

Study Design

- Interior walkthrough (Digital recorders, Canon SLRs)
- Exterior walkthrough (Drone flights x 2)
- Employed CPTED framework from USDOJ - C.O.P.S. (Zahm, 2007)

Radford County Public Schools (RCPS)

- Four schools:
Belle Heth, McCarg, Dalton, Radford High
- Student vs. total faculty/staff population:
Belle Heth: 482/32 (15:1)
McCarg: 386/24 (16:1)
Dalton: 269/22 (12:1)
Radford High: 509/39 (13:1)



Initial Observations

-- Much to applaud both inside and out...



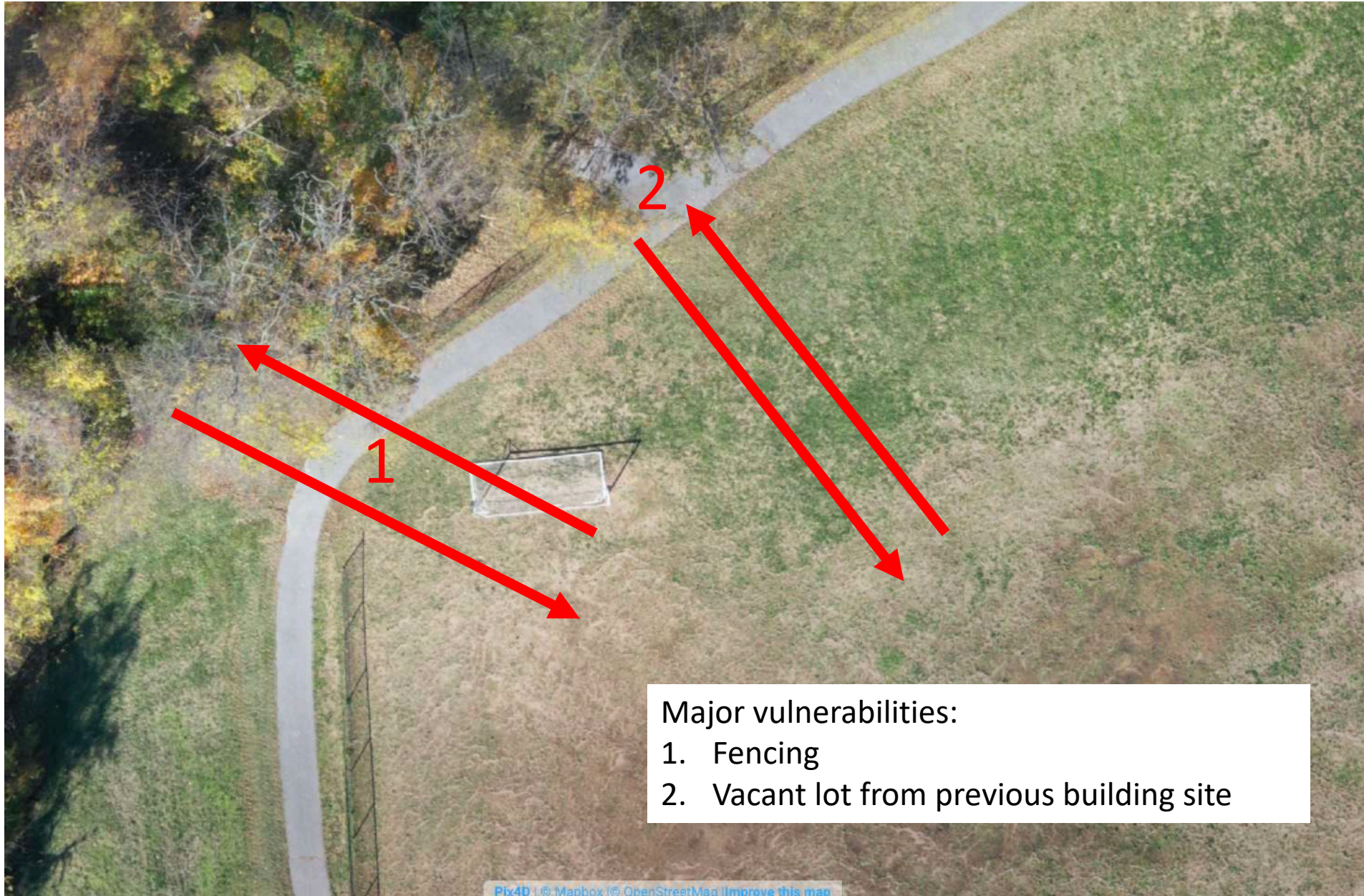
Initial Observations



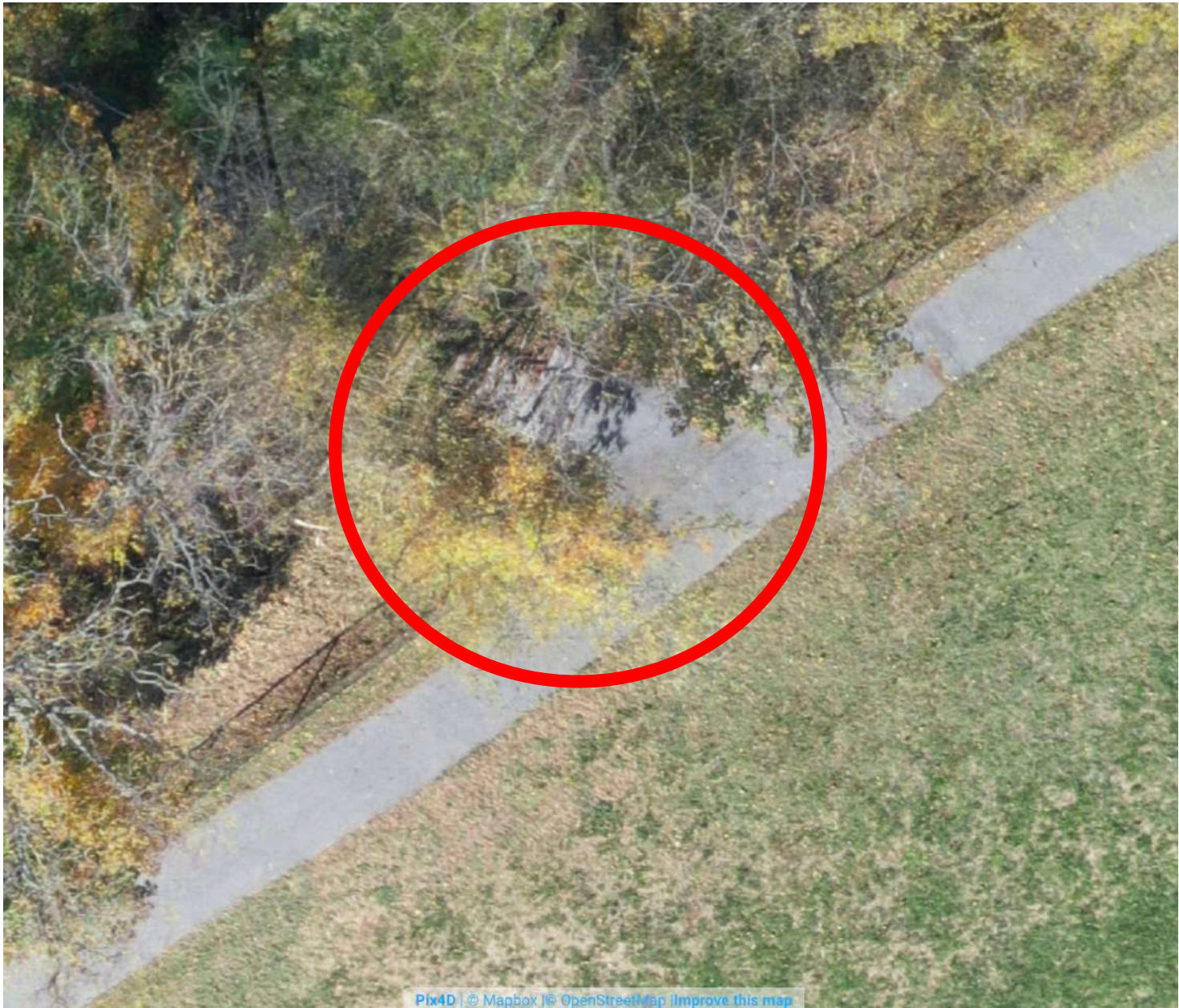
Major vulnerabilities:

1. Fencing
2. Vacant lot from previous building site
3. Vacant construction lot (off-premises)

BELLE HETH DRONE ZOOM-IN #1



BELLE HETH DRONE ZOOM-IN #2



CPTED Issue #1: Access



CPTED Issue #2: Surveillance

Improvements Made:



Fence extended...



...and secured

Improvements Made:



CPTED Issue #3: Access



CPTED Issue #4: Access

Improvements Made: Interior Door Installed w/ Interior Safety Lock



Recommendations

- Site visits must become more frequent; incorporated into annual routine
- Must overcome cultural apprehension/predisposition hindering such project, measures implementation
- Find ways to expand recruiting and incentivization of SROs
- Do not overlook the psycho-social elements; preventing school attacks alone via CPTED won't do

References and Questions

Brantingham, P. L. & Brantingham, P. J. (1981). *Environmental Criminology*. Beverly Hills, CA: Sage.

Felson, M. (2017). The routine activity approach. In R. Wortley & M. Townley (Eds.). *Environmental criminology and crime analysis* (pp. 90-97). New York, NY: Routledge.

Fennelly, L. J., Perry, M. A., & Timm, P. (2014). Best practices: A 16-point master plan. In L. J. Fennelly & , M. A. Perry (Eds.), *The handbook for school safety and security: Best practices and procedures* (pp. 3-9). Waltham, MA: Elsevier.

Wortley, R., & Townley, M. (2017). *Environmental criminology and crime analysis* (2nd ed.). New York, NY: Routledge.

Zahm, D. (2007). *Using crime prevention through environmental design in problem solving*. Washington, D.C.: United States Department of Justice.