

# COMBINING DATA AND COMMUNITY RESOURCES TO REDUCE CRIME AT RISKY PLACES

---

Dr. Joel Caplan

Rutgers University, School of Criminal Justice



## CPTED

- ▶ Design physical environment to positively influence human behavior

## CRIME PATTERN THEORY

- ▶ Environmental backcloth; Attractors & Generators

## ENVIRONMENTAL CRIMINOLOGY

- ▶ Study how people and places relate to crime



## HOT SPOTS

- ▶ Crime incidents cluster at the same places

## NEAR REPEAT ANALYSIS

- ▶ Crime risk is greater within a short distance and time period after a new crime incident

## THEORY OF RISKY PLACES

- ▶ Vulnerability + Exposure = 'Risky Places'



FRAME  
TODAY'S  
DISCUSSION  
WITHIN  
PRIOR  
RESEARCH



# FOCUS ON THE PLACES THAT NEED YOU MOST

## DIAGNOSE

- ▶ Crime patterns to identify key attractors/generators

## DEPLOY

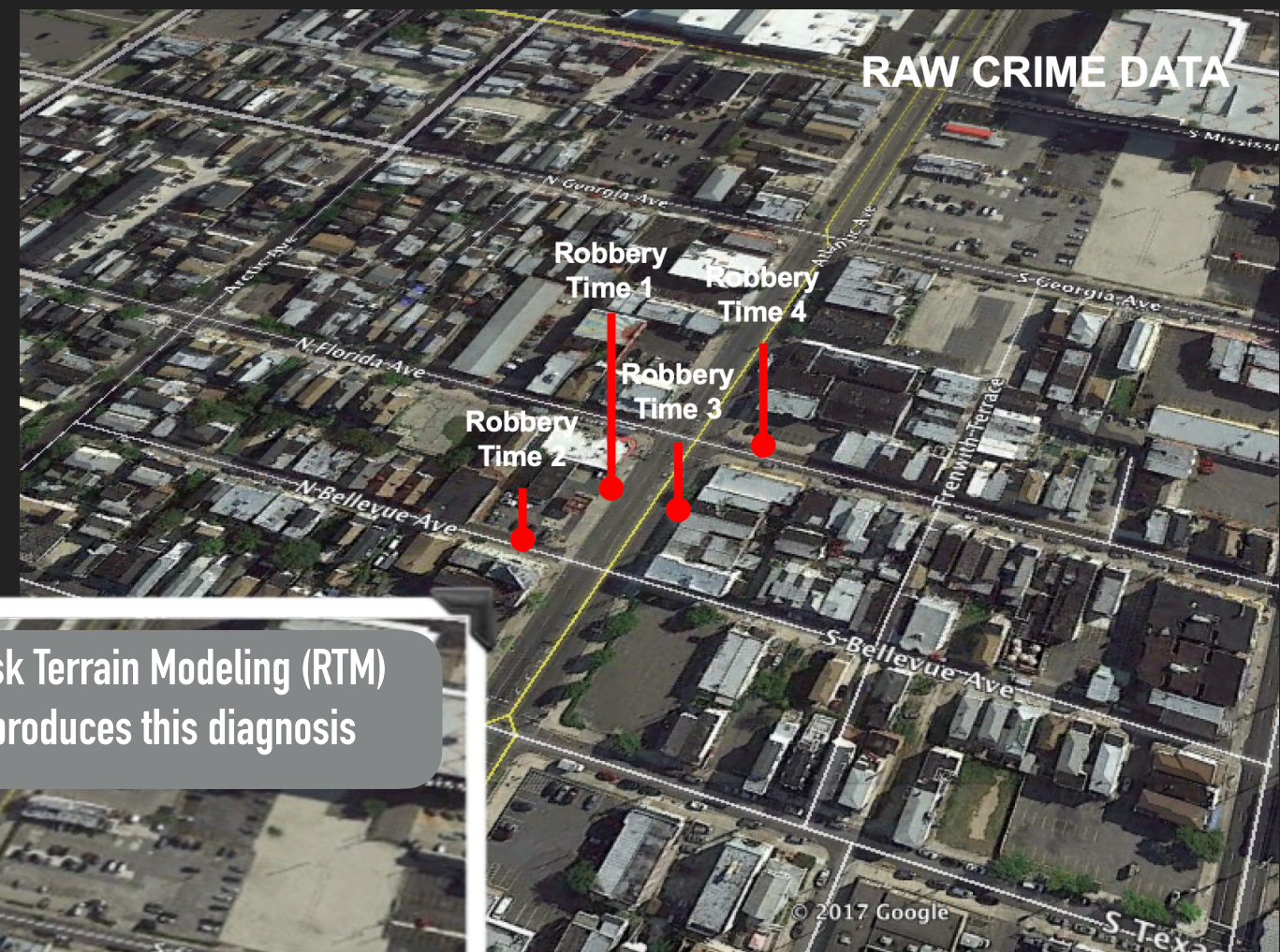
- ▶ Resources at priority places based on our knowledge of current vulnerabilities and exposures

## PREVENT

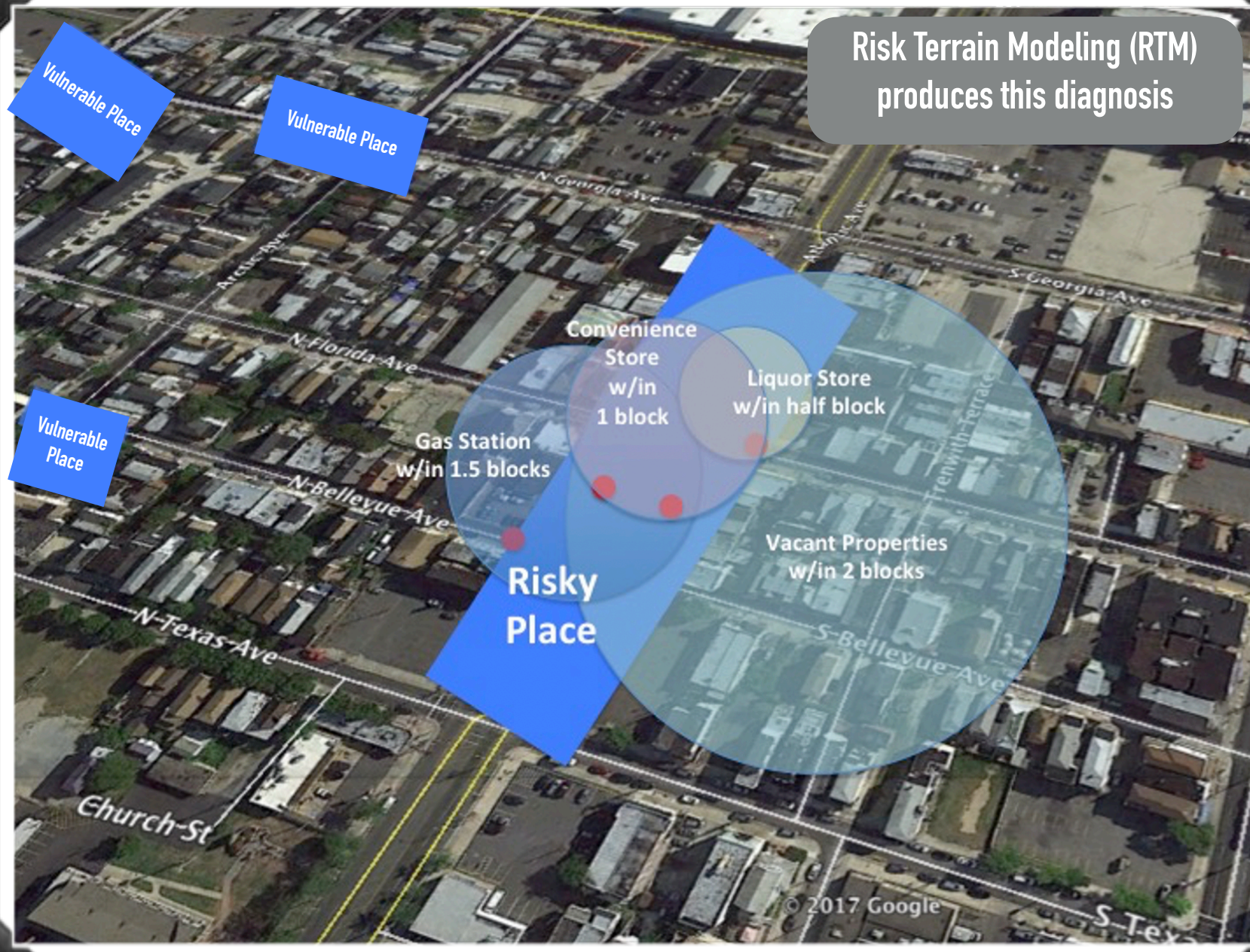
- ▶ Crime & other threats to public safety while meeting community expectations



**Diagnose** crime patterns to identify 'behavior settings' within the 'environmental backcloth'



Risk Terrain Modeling (RTM) produces this diagnosis





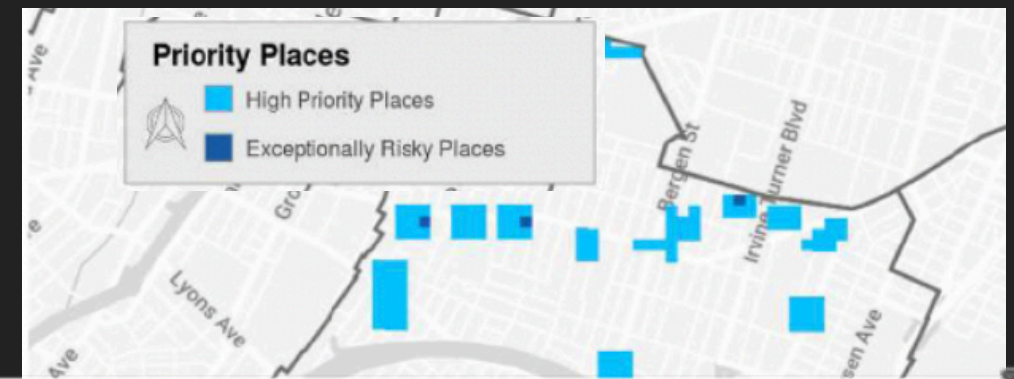
# DIAGNOSE

*I examine multiple facilities at once across an entire jurisdiction in one reproducible task.*

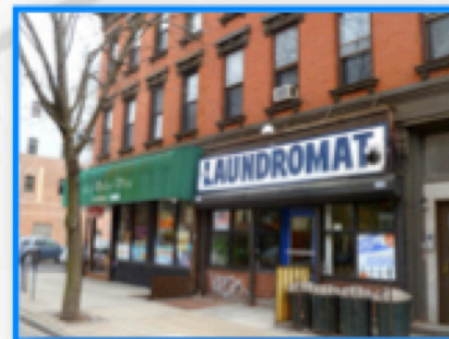
– Crime Analyst (Essex, UK)

- ▶ **Identify place features that connect with crime**
  - ▶ Find interactions that create opportunities for crime
  - ▶ Risk Terrain Modeling (RTM): Empirically minimize uncertainty

# Deploy to disrupt opportunities for crime

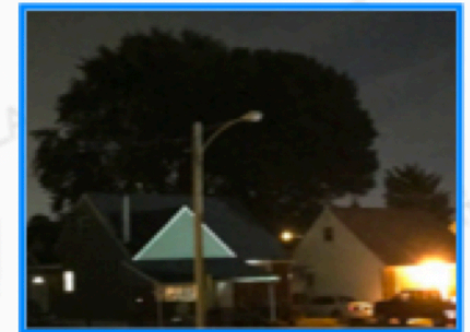


Apartments, Banks, Bars, Check Cashing Services, Coffee Shops, Grocery Stores, Department Stores, Self-Betterment Centers, **Convenience Stores**, Health **Laundromats**, Public Libraries, Liquor Stores, Manicuring Shops, Movie Theaters, Parking Lots, Parks, Gas Stations, Pawn/Second Hand Dealers, Pharmacies, Rec Centers, **Vacant Buildings**, Restaurants, Variety Stores, Schools, Shelters.



Police focus patrols and conduct business checks...

Police patrol at peak times; Public Works adds street lights



Planning Department boards-up and demolishes priority vacant buildings

Make results from the RTM diagnosis actionable

... and relatable to people in the field

## Risk Narratives

# DEPLOY

*Diagnosing risk terrains offers an irreversible perspective on safety and risk that drives action and innovation.*

– Data Science Manager (Edmonton, Canada)

## ► Maximize Existing Resources

- Prioritize places (objectively)
- Know where & when to go, and what to focus on
- Include multiple stakeholders
- Increase transparency

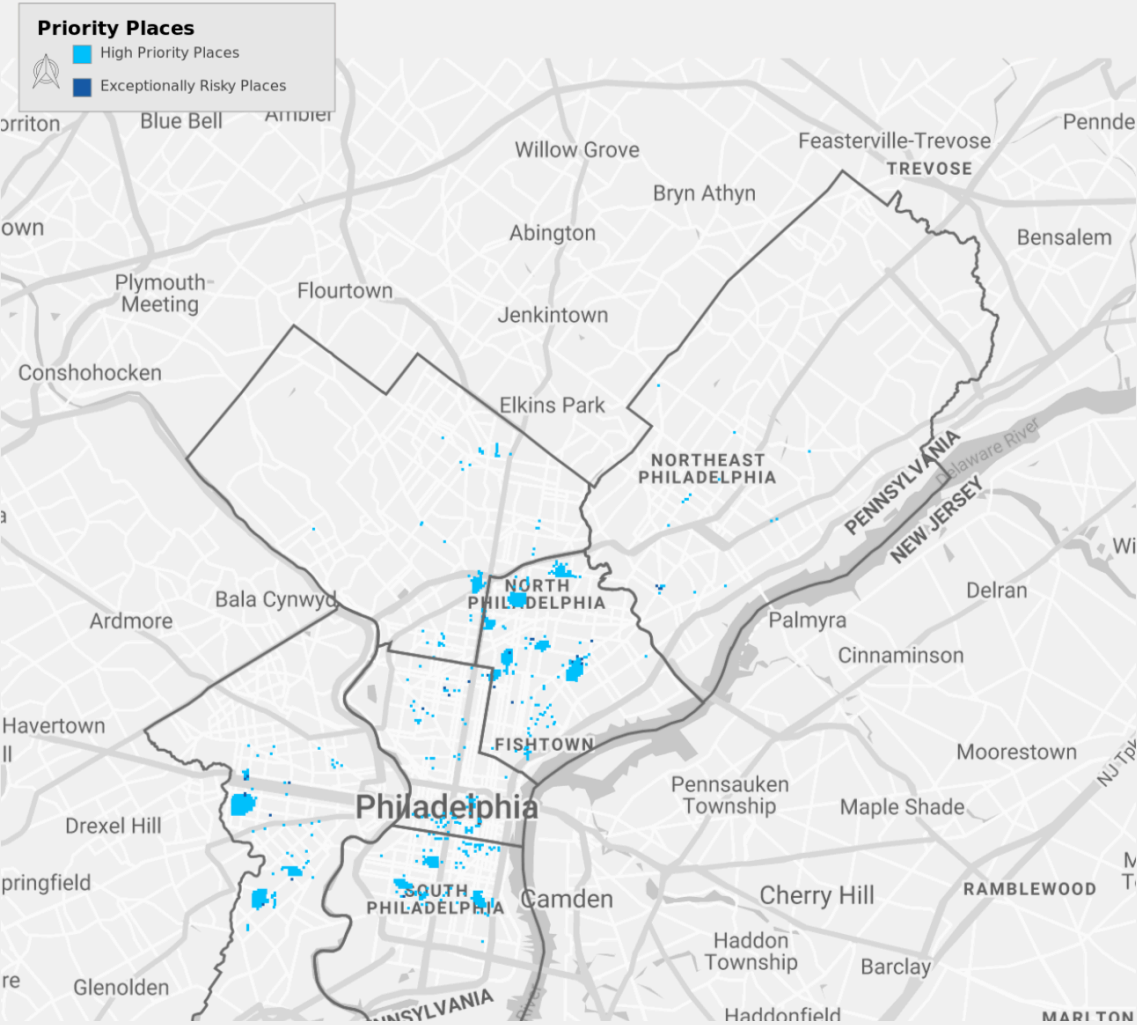
# TWO QUICK CASE STUDIES

**Shootings** (Philadelphia)

**Robberies** (Atlantic City)

*It improves community relations and does not define people as the problem. We reduced crime without contributing to mass incarceration.*

– Chief of Police (Atlantic City, New Jersey)



GIS Tools

Open GIS Workspace

Map Type

The map(s) to be downloaded or included in the generated report PDF can be previewed to the left.

These maps are for illustration purposes. Download maps with all relative risk scores to fully explore risky places in a GIS.

Report Options

Generate Report PDF

Explore / Geocode

Priority Places

Shows all places with relative risk scores (RRS) two standard deviations or more above the mean that intersect with recent past exposures to create exceptionally risky places (displayed in dark blue) and/or places with RRS equal to or greater than the top 1% value (displayed in light blue). At least 1% of places in the study area are displayed.

[Download Google Maps KML](#)

Results

**Agency Edition**

You have access to all available outputs, including customizable PDF reports, PNG images, KML maps, vector shapefiles, raster data, and raw statistical files. These give you the most flexibility to view and share results, or for further study in a geographic information system (GIS), Google Earth, or other statistical programs.

Download PNG and KML Files

Download Shapefiles, Raster Data and Raw Statistical Files

**Analysis units of forecast** = 250 ft places  
**Total Number of Places** = 64625  
**RRS Statistics:**  
Range = 1 to 438.334  
Mean = 15.518  
Standard Deviation = 24.465  
Number of Places greater than 2 Standard Deviations from the Mean = 2782 (4.30% of the study area)

Analysis Duration: 1 hr 16 min 45 sec  
GIS Duration: 3 min 56 sec  
Image Duration: 9 min 9 sec  
**Total time: 1 hr 29 min 50 sec**

Risk Factor Name	Operationalization	Spatial Influence	Relative Risk Value	Download
Grocery_and_Convenience	Proximity	1000	4.856	<a href="#">Download KML</a>
ATM	Proximity	1500	3.701	<a href="#">Download KML</a>
BeautyEyeNailWigHairMakeup	Proximity	250	1.798	<a href="#">Download KML</a>
PreciousMetals_Jewelry_Pawn	Density	1250	1.708	<a href="#">Download KML</a>
KindergartenToElementary	Proximity	1500	1.509	<a href="#">Download KML</a>
Auto_Repair	Proximity	1500	1.416	<a href="#">Download KML</a>
Laundries	Proximity	1500	1.289	<a href="#">Download KML</a>

BACK



Study Area

Unit of Measurement

Analysis Issue

Risk Factors

Summarize &amp; Run

Report

## Priority Places

- High Priority Places
- Exceptionally Risky Places

## GIS Tools

Open GIS Workspace

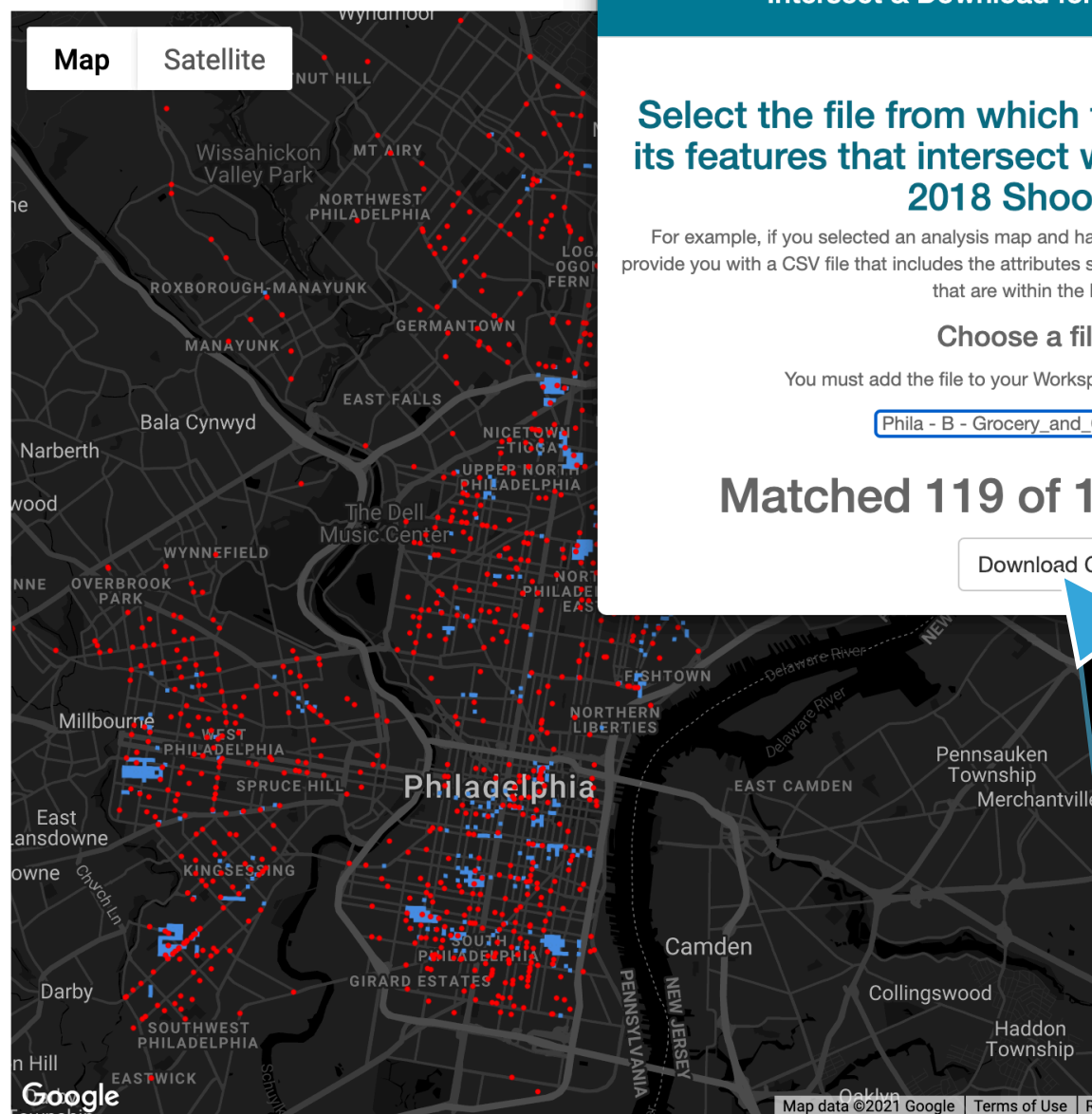
## Map Type

## Results

## Agency Edition

You have access to all available outputs, including customizable PDF reports, PNG images, KML maps, vector shapefiles, raster data, and raw statistical files. These give you the most flexibility to view and share

## Map



## Intersect &amp; Download for: 2018 Shootings T1

Select the file from which to retrieve attributes for its features that intersect within the visible cells of 2018 Shootings T1

For example, if you selected an analysis map and have set the symbology to Priority Areas, this will provide you with a CSV file that includes the attributes such as address fields for points in the selected file that are within the Priority Areas.

## Choose a file below:

You must add the file to your Workspace first for it to show up here.

Phila - B - Grocery\_and\_Convenience.shp

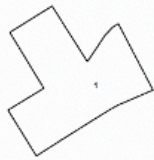
Matched 119 of 1210 total rows.

Download CSV file

2018 Shootings T1_P...				
Home Insert Draw Page Layout Formulas Data Review >> + Share				
A1 COMPANY_NAME				
A	B	C	D	E
1	COMPANY_NAME	PRIMARY_AD	PRIMARY_CI	PRIMARY_ST PRIMARY_ZI
2	MARKET GROCERY	6033 MARKET ST	PHILADELPHIA	PA 19139
3	SUNSHINE SUPER MARKET	16 S 60TH ST	PHILADELPHIA	PA 19139
4	EAGLE'S CORNER	6200 SPRUCE ST	PHILADELPHIA	PA 19139
5	SITA T AFRICAN GROCERY STORE	6621 WOODLAND AVE	PHILADELPHIA	PA 19142
6	BMB INTERNATIONAL	6510 WOODLAND AVE	PHILADELPHIA	PA 19142
7	MD INTERNATIONAL GROCERY	6229 WOODLAND AVE	PHILADELPHIA	PA 19142
8	JAQUEZ NEIGHBORHOOD GROCERY	2128 S 67TH ST	PHILADELPHIA	PA 19142
9	THIRTY EIGHT CORP	6000 CHESTER AVE	PHILADELPHIA	PA 19142
10	JULIAN TORRES GROCERY	1930 S 65TH ST	PHILADELPHIA	PA 19142
11	B & D GENERAL MERCHANDISE INC	6514 WOODLAND AVE	PHILADELPHIA	PA 19142
12	S T INTL MARKET	6703 WOODLAND AVE	PHILADELPHIA	PA 19142
13	BENGELENA GROCERY STORE LIC	6507 WOODLAND AVE	PHILADELPHIA	PA 19142
14	MENASHA GROCERIES & VARIETY	6206 WOODLAND AVE	PHILADELPHIA	PA 19142



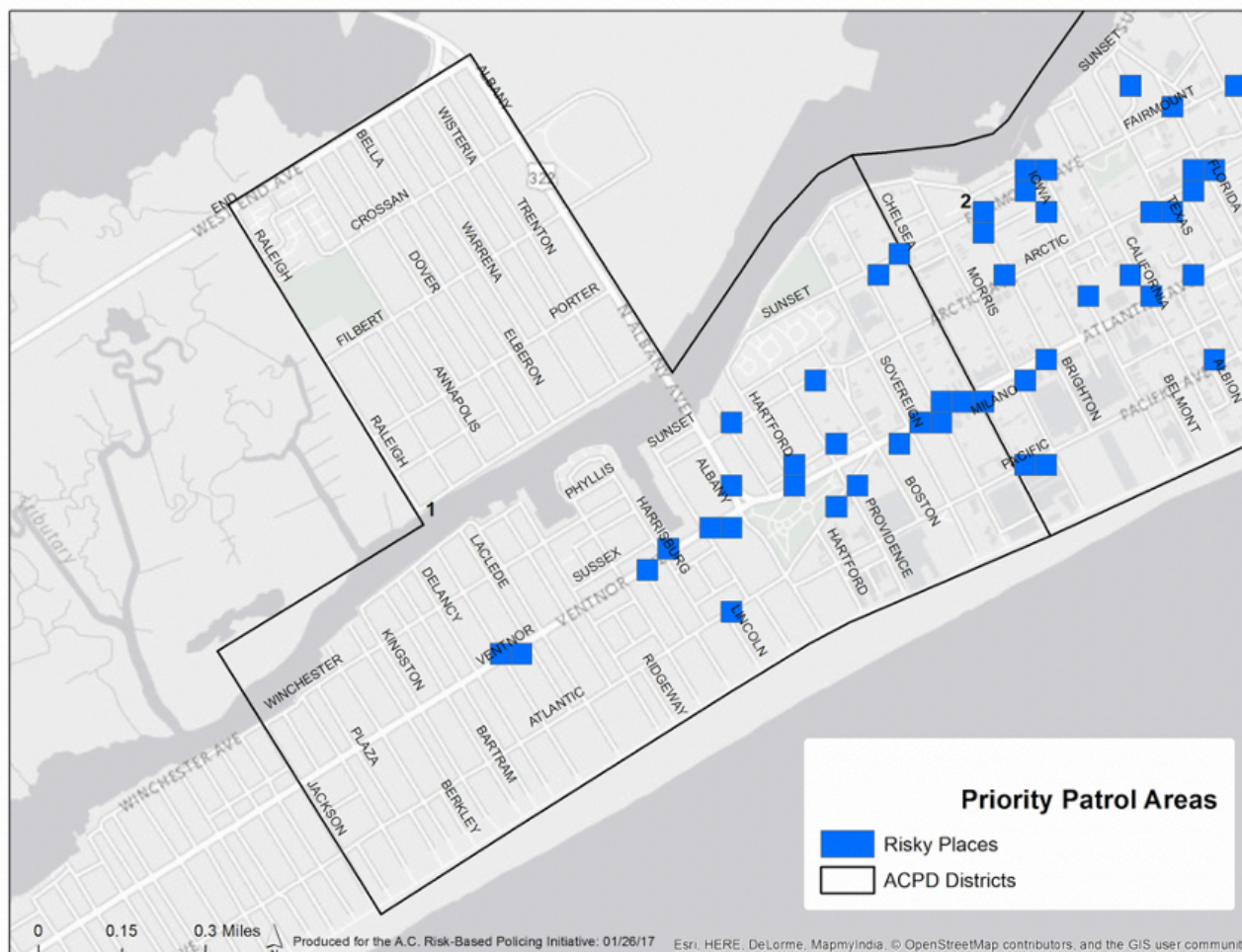
## 2017 Target Area Risk Factors



### District 1 - Risk-Based Policing

#### 1. Convenience Stores

Business Name	Address
BABAJAN FOOD MARKET	3104 PACIFIC AV
GOLDEN MERCHANDISE	3120 ATLANTIC AVE
ROSARIO'S MINI MARKET	3303 ATLANTIC AVE
AC FOOD & VARIETY	3307 ATLANTIC AVENUE
BOOM FOOD MARKET	3601 VENTNOR AV
TOBACCO JUNCTION & VARIETY	3313 ATLANTIC AVENUE



# POLICE PRACTICE & RESEARCH

## An International Journal



POLICE PRACTICE AND RESEARCH  
<https://doi.org/10.1080/15614263.2021.1917399>

**Routledge**  
Taylor & Francis Group

ARTICLE

Check for updates

### Data-informed crime prevention at convenience stores in Atlantic City

Leslie W. Kennedy<sup>a</sup>, Joel M. Caplan<sup>a</sup> and Grant Drawve<sup>b</sup>

<sup>a</sup>Rutgers School of Criminal Justice, Newark, NJ, USA; <sup>b</sup>Department of Sociology and Criminology, University of Arkansas, Fayetteville, Arkansas, USA

ACPD diagnosed spatial patterns of robbery then focused on convenience stores to dynamically deploy their patrol officers.

**Robberies decreased 63%**



When diagnosing  
crime patterns  
and deploying  
resources is  
spearheaded by  
police...

RiskBasedPolicing.com



# RISK-BASED POLICING

Evidence-Based Crime  
Prevention with Big Data  
and Spatial Analytics



LESLIE W. KENNEDY  JOEL M. CAPLAN  ERIC. L PIZA



POLICE ARE ASKED TO DO A LOT, AND STRETCHED BEYOND THEIR EXPERTISE

## DISORDER & CRIME

Loitering / Homelessness / Mental Illness

Burglary / Robbery / Homicide

## POLICE

expected to handle all calls-for-service and carry the full burden for crime prevention

## THE RIGHT RESOURCES, TO THE RIGHT PLACES, AT THE RIGHT TIMES

### DISORDER & CRIME

Loitering / Homelessness / Mental Illness

Burglary / Robbery / Homicide

### POLICE

focus on more serious problems

Other City Services

NGO / Local Orgs

REDUCED DEMAND = BETTER FOCUS ON PRIORITIES = BETTER OUTCOMES



PROBLEM

RTM

ANALYSIS

MULTIFACETED  
INTERVENTION  
STRATEGY

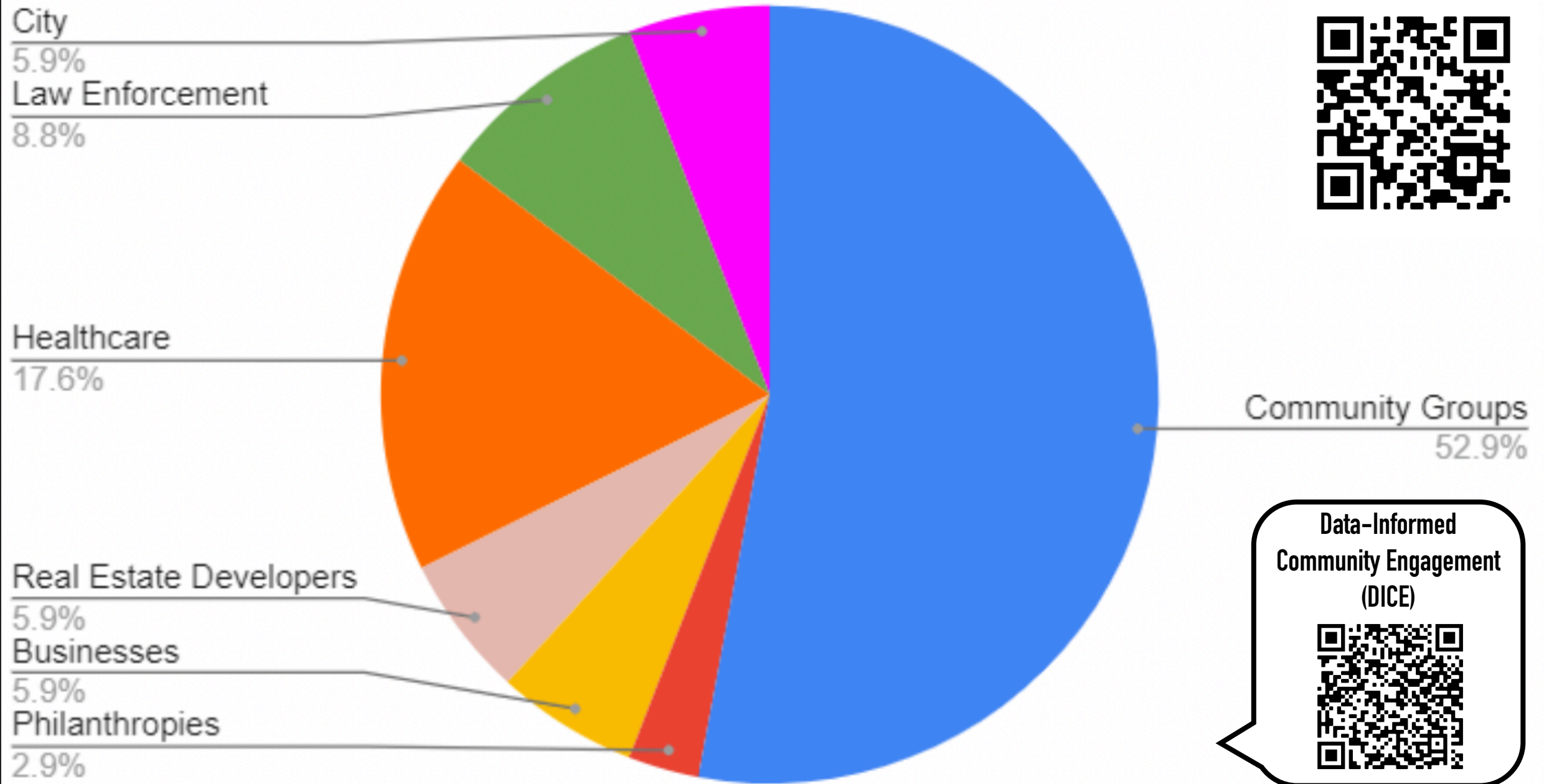
Crime Prevention

Deeply understanding each problem and think creatively about the best possible tailor-made responses.

— Goldstein, 2018  
[Stockholm Prize in Criminology Acceptance Speech]

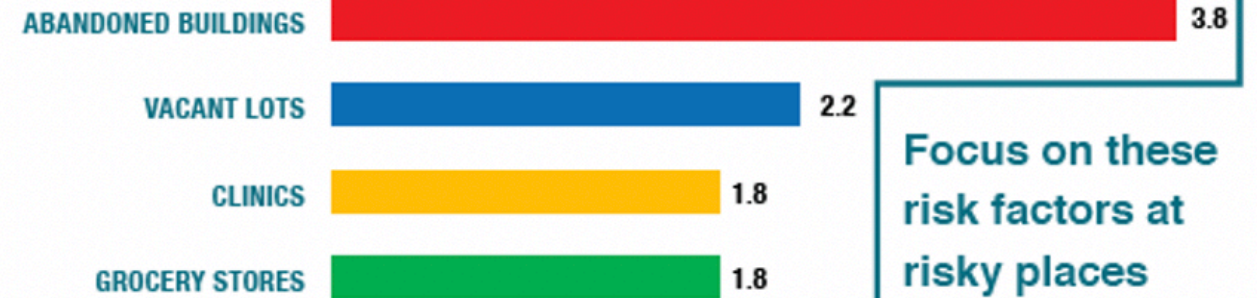
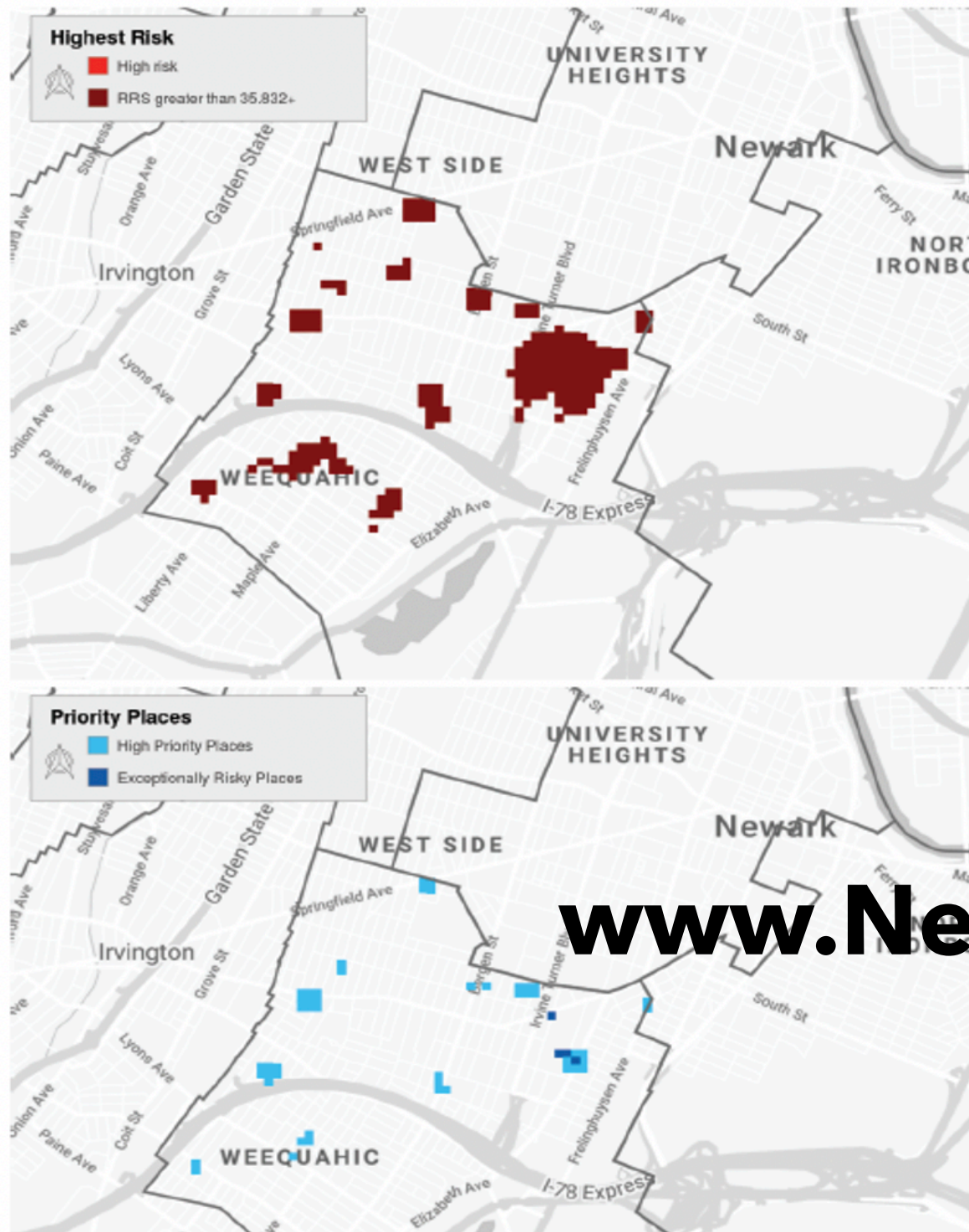
Monthly meetings with diverse stakeholders.

Informed by the same data & analytics, they add context to crime problems, then form strategies to disrupt the risk narratives.





## VULNERABLE PLACES FOR AGGRAVATED ASSAULT IN THE SOUTH WARD, NEWARK



### Abandoned buildings in priority places\*

- 812 Clinton Ave
- 7 Ridgewood Ave
- 16 Ridgewood Ave
- 583-585 Bergen St
- 59 Hillside Ave
- 83 Schley St



[www.NewarkCollaborative.org](http://www.NewarkCollaborative.org)

### Vacant lots in priority places\*\*

- 526 Springfield Ave
- 523 Springfield Ave
- 579 Bergen St
- 797 Bergen St
- 807 Bergen St
- 799 Bergen St

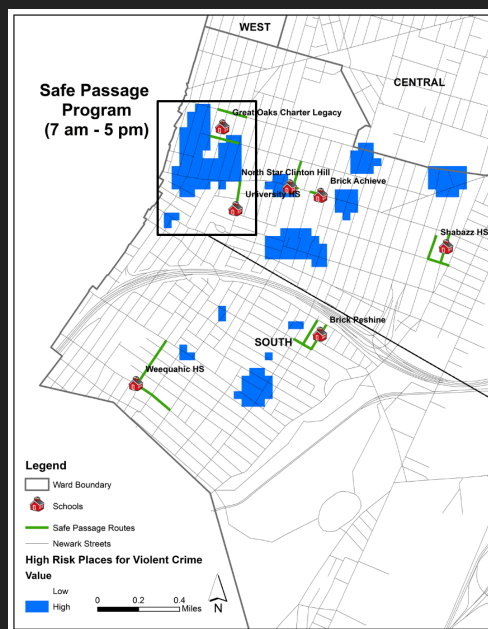




Site suitability analysis; Remediate abandoned buildings and improve access to affordable housing



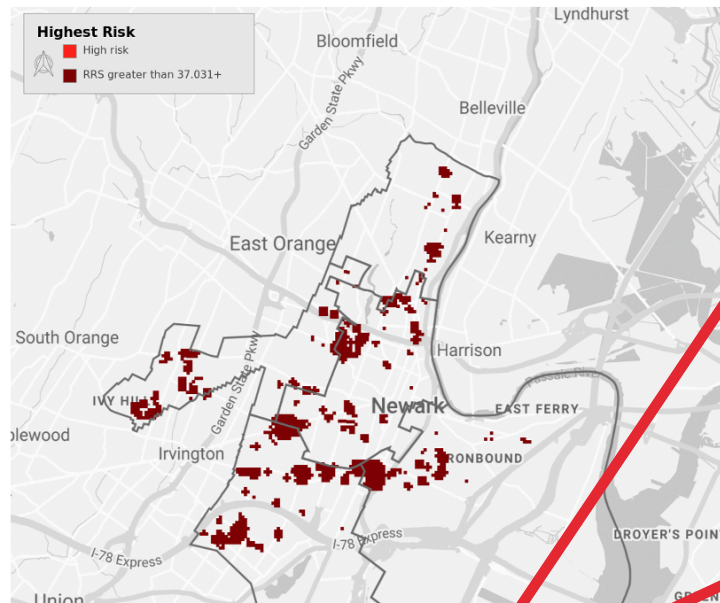
Adopt city-owned vacant lots in high-risk places & turning them into useable, maintained, spaces



Outreach Workers are deployed to help ensure safe passage for children walking to and from school along high-risk routes



## Violent Crime Risk Analysis (1/1/2021 – 3/18/2021)



- "vic was depositing currency inside the atm when a unk male approach from behind placed a unk object on her back & demanded property. sus removed currency from vic purse & fled the scene"
- "time: 0015-0029, v: y, f: n vic was depositing \$90.00 inside the atm when an unk bm approached him from behind std do not put the money in the machine sus then pushed vic on the ground punched him several times & tk \$90.00 & his wallet"

Main Risk Factors: Abandoned buildings, ATMs, and vacant lots.

[newarkcollaborative.org/atm-public](http://newarkcollaborative.org/atm-public)



## Public Awareness Message for ATM Users

### ATM USERS PROTECT YOURSELVES

#### CHOOSE ATM LOCATIONS WISELY!

#### Use ATMs:

- ✓ In a WELL-LIGHTED location.
- ✓ Located NEAR the center of a building, NOT at the corner.
- ✓ Monitored by CCTV CAMERAS and/or at a SECURED bank branch building.
- ✓ HIGHLY VISIBLE to other people from the surrounding area.
- MINIMIZE time at the ATM- Have card ready when you approach.
- Count your money LATER, NOT at the ATM.
- BE AWARE of your surroundings during the ENTIRE transaction.
- BE AWARE OF ANYONE sitting in a parked car near the ATM location.
- NEVER leave your receipt behind. DO NOT throw it away at the ATM site.
- If you leave your car to use the ATM, be sure to LOCK IT.
- MEMORIZE your PIN; DO NOT write it down.
- BEWARE of a scam called "skimming," where thieves attach realistic-looking electronic devices to the ATM designed to capture your card information and PIN. If an ATM card reader appears unusual, use another ATM.
- DO NOT accept assistance from anyone you do not know when using an ATM, including strangers offering to help because they say the ATM is broken. It may be a trick. BE AWARE.

NPSC's collective goal is to improve Public Safety and Wellness for all Newark residents



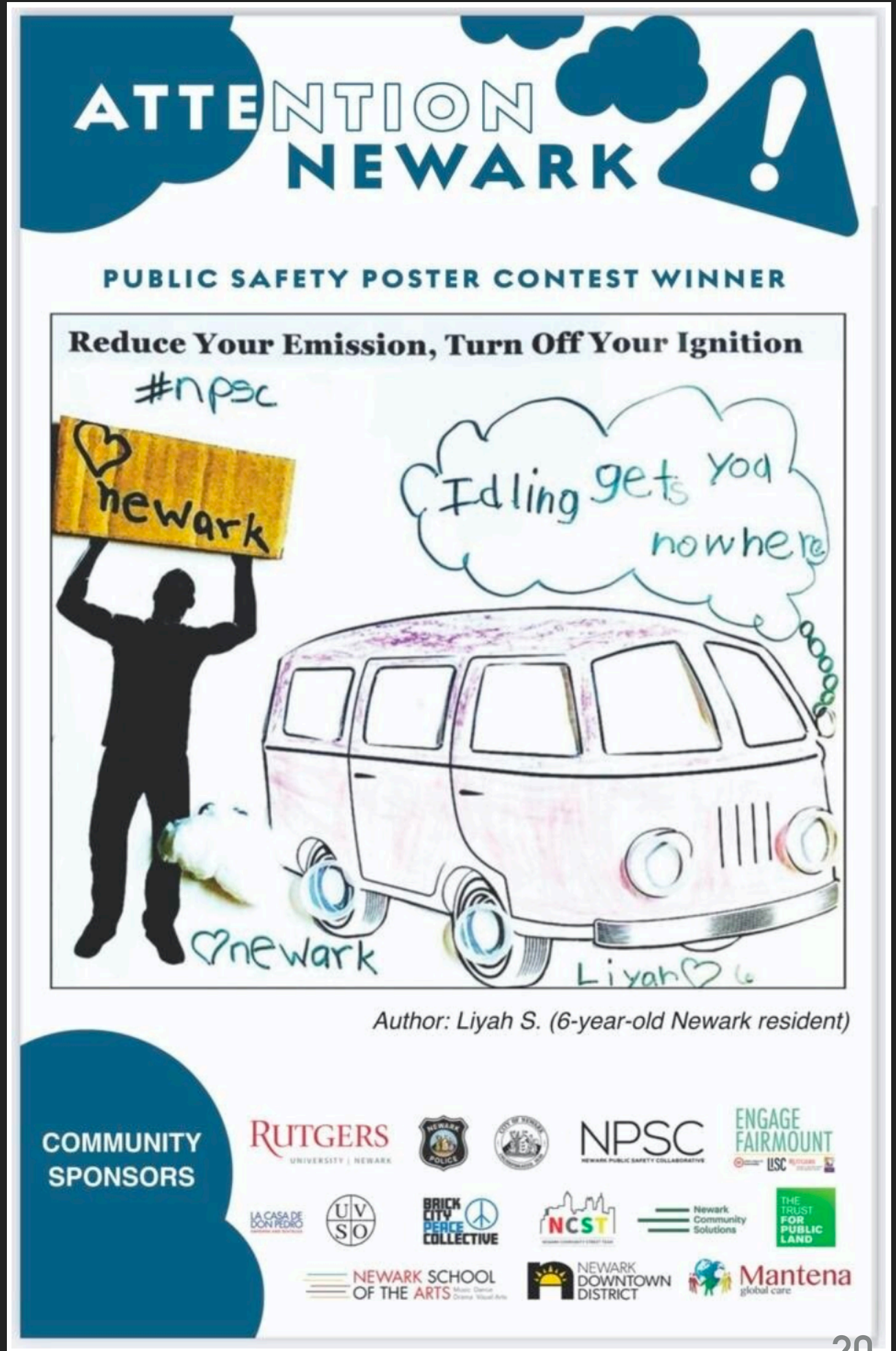


## Art School, Businesses and the Police: A Case Study



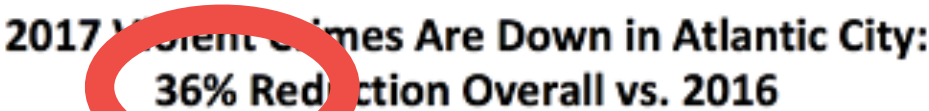
Motor Vehicle Theft  
DECREASED 40%

[newarkcollaborative.org/mvtcampaign](http://newarkcollaborative.org/mvtcampaign)





- President of CPAL (Dallas, Texas)



# PREVENT

*Diagnosing risky places offers a non-biased approach to addressing the reason for why crime is occurring at a given location. It allows us to focus on the true causes of crime and fix the problems.*

– Assistant Chief (Fayetteville, NC)

## ► Solve Problems

- Quickly before they persist
- Address existing chronic hot spots (attractors/generators w/in them)
- Meet community expectations
- Deliver (trauma-informed) services to people at the places needing it most

# PREVENTION

- ▶ (ASEPB) Evidence-based policing flows from EB Medicine
- ▶ Medicine relies on multiple specialists to prevent and treat illness or trauma. Specific problems require coordination among multiple experts (e.g., pathologists, nurses, internists, radiologists, surgeons) . . . and outside partners.
- ▶ Crime problems require multiple stakeholders and resources too

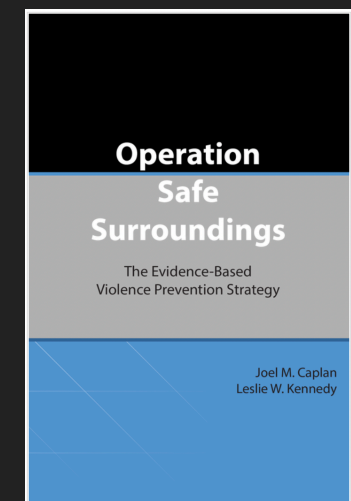
*"We need to differentiate between law enforcement and public safety."*

- Director, Dallas Office of Integrated Public Safety Solutions (Texas)

## Think differently about crime prevention...

It's not about choosing one or another "strategy".  
It's about the process for data sharing and  
problem-solving, with inputs & actions from many  
stakeholder perspectives, to coordinate multiple  
resources.

## The PROCESS for co-production is the strategy!



OPERATION SAFE SURROUNDINGS  
(HOW-TO; EBOOK)

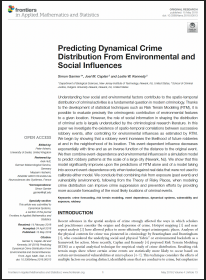


END

---

**LET'S  
CHAT...**





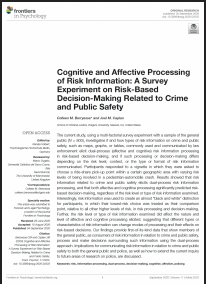
Predicting Dynamical Crime Distribution from Environmental and Social Influences (theory test, article)

▶ <https://www.frontiersin.org/article/10.3389/fams.2018.00013>



Using Vulnerability and Exposure to Improve Robbery Prediction and Target Area Selection (theory test, article)

▶ <https://link.springer.com/article/10.1007/s12061-019-09294-7>



Cognitive and Affective Processing of Risk Information (risk communication, article)

▶ <https://doi.org/10.3389/fpsyg.2020.02222>



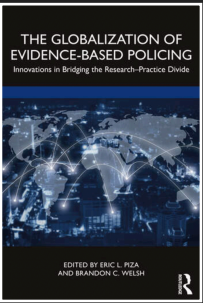
Systematic Review and Meta-Analysis of Risk Terrain Modeling as a Spatial Forecasting Method (article)

▶ <https://crimesciencejournal.biomedcentral.com/articles/10.1186/s40163-021-00149-6>



The Crime Risk Kaleidoscope (article)

▶ <https://doi.org/10.1016/j.apgeog.2016.12.011>



Data-Informed Community Engagement (chapter in edited book)

▶ [www.routledge.com/The-Globalization-of-Evidence-Based-Policing-Innovations-in-Bridging-the-Pizza-Welsh/p/book/9780367461966](http://www.routledge.com/The-Globalization-of-Evidence-Based-Policing-Innovations-in-Bridging-the-Pizza-Welsh/p/book/9780367461966)

PNG image of this slide >



TEDx (video)

▶ [youtu.be/5hKWLY1LZrs](https://youtu.be/5hKWLY1LZrs)



NPSC (video)

▶ [youtu.be/-az\\_Q8shgX0](https://youtu.be/-az_Q8shgX0)